

2023 Print Patterns

Jackson, MS

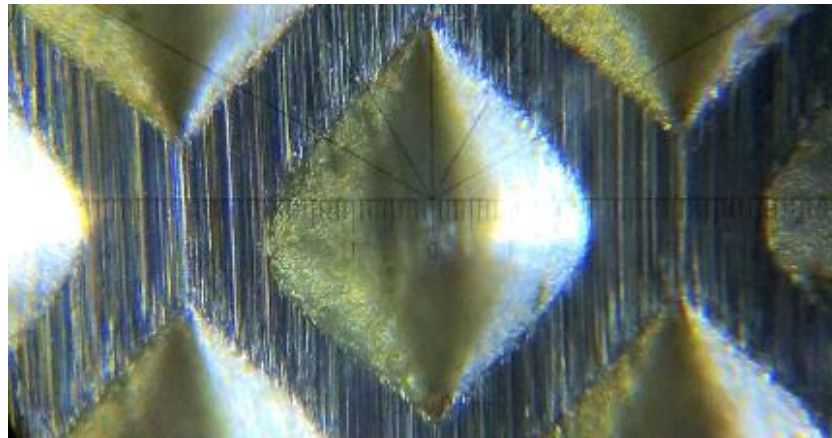
Precoat Metals Print Excellence

- Tandem Print Capability
- Precision Edge Guide
- Slitting and Cut-to-Length
- In-House Color Matching
- Custom Print Design Services
- 62" Width Capability
- Hot Dipped Galvanize
- Galvalume
- Cold Rolled Steel
- Aluminum



Gravure Printing

- Predominant type of printing at Precoat Metals
- Steel body rolls are copper plated, engraved then chrome plated
- Diamond etch or laser etched
- Inks are really coatings with higher pigment loading
- Roll mfg. very consistent
- Color control very good
 - (deep reds and blues not as consistent)
- Quantifiable attributes
 - Roll wear
 - Color Control/Trending
 - Operating parameters
- Very good resolution, image/artwork detail



Quality

Color Control

- Use of CDM helps track and chart color trend
- Precision Edge Guide at Prime and Finish Coaters
- Speed match tolerance equal to +/- 0.5% or 0.16"

Polyester Prints

- 0T – 4T
- H – 4H
- Any Gloss
- Exterior Grade available
- Higher performance resins
- Inorganic Pigments
- Warranties on request – 5 year – Limited Max

PVDF Prints

- 0T – 4T
- HB-F (2H w/FEVE Clear)
- PVDF – 5-25 Gloss (FEVE up to 80)
- Warranties on request – up to 40 year

Slitting/Shape Correction

- Double wide DDS (Garage Door) must be flat from mill
- Correcting 50+ I-Units at slitter may neck strip out of tolerance
- CQ or harder will slit and semi-shape correct without necking



Coating Systems and Substrates

One Pass Systems

PVDF or Polyester only

- Basecoat at Prime Coater
- Ink at Finish Coater 1
- Clear at Finish Coater 2

Two Pass Systems

PVDF or Polyester only

1st Pass

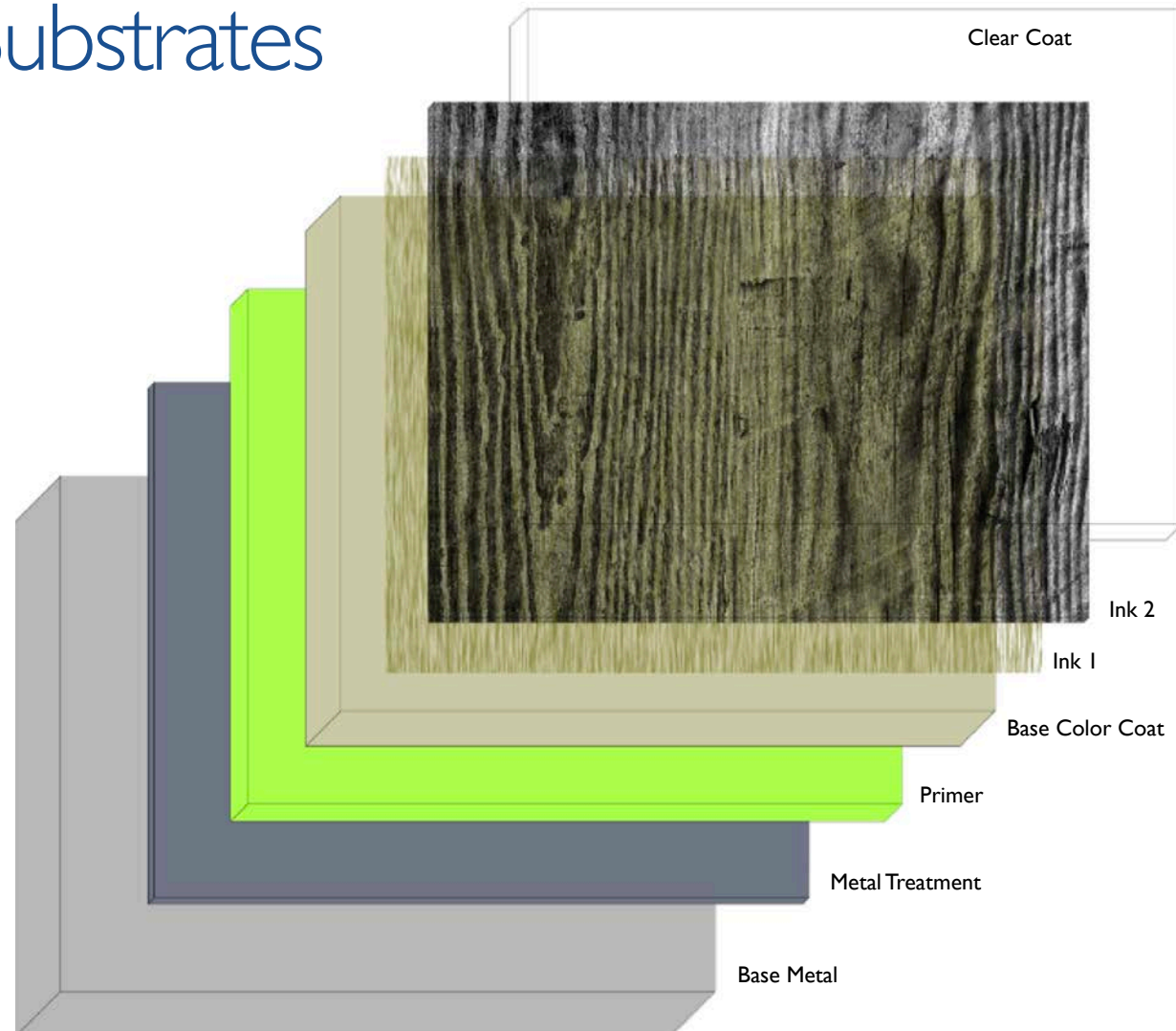
- Primer at Prime Coater
- Basecoat at Finish Coater 1

2nd Pass

- Ink #1 at Prime Coater
- Ink #2 at Finish Coater 1 (optional)
- Clear at Finish Coater 2

Metal Treatment

- Alum and Glum = 1402W
- Galv and EG = 1421/1402W



Lead Times

Custom Color Matches

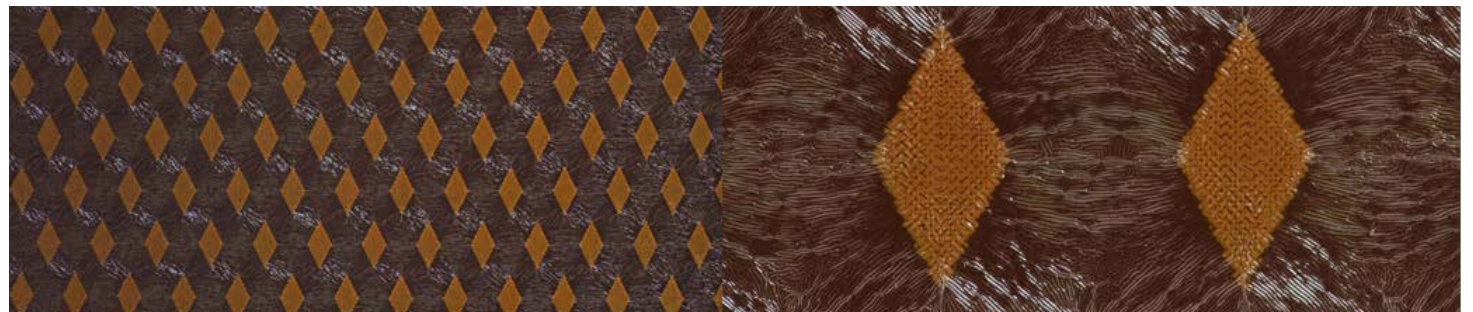
- Often the most challenging component to a new design
- Time for customer sample/direction
- Time for vendor to produce wet sample
- Time for PCM to do drawdowns
- Time for customer approval
- Time for paint order for the line

Custom Design Work (artwork)

- 1-5 weeks

Custom Print Roll

- We quote 12 weeks from start to finish after artwork is approved
- Time for NDA's, negotiated setup fee, executed purchase order, roll(s) procurement and color matches
- A new print roll takes 2-4 weeks for the body and 4-6 weeks for the plating and engraving
- Lab plates can be completed in 2-4 weeks
- Wet samples take 2 weeks
- Drawdowns and color approvals take place while print roll(s) are being made



Color Control Protocol



1. Standard

The base line color standard is established following successful line trial and ultimate certification by end user. The standard is understood to be target from which expected color shift will occur.

2. Color Monitoring

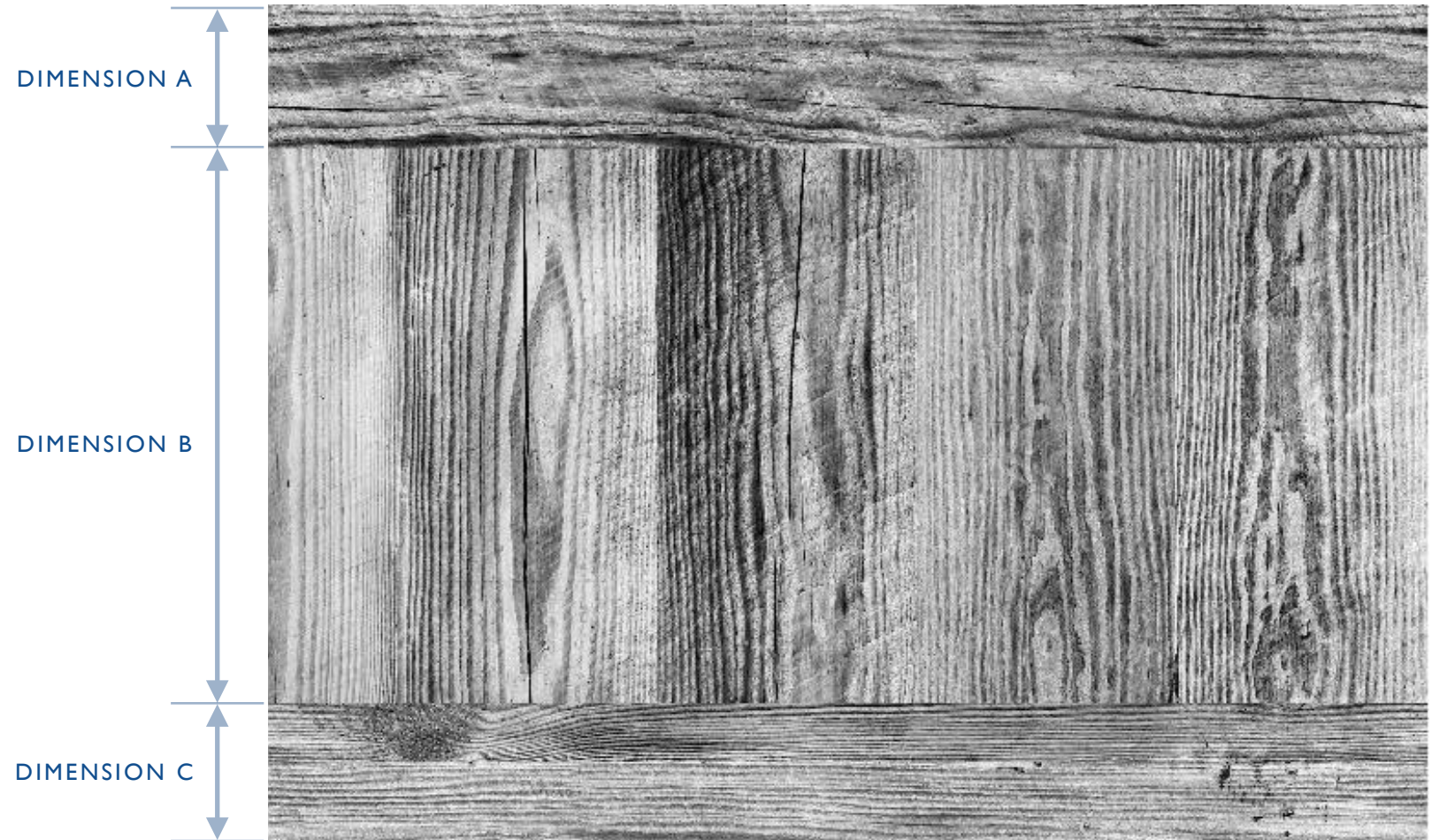
Color measurement occurs at each step of the application process. While the base coat application is LAB tolerant the ink and ink/clear will exhibit large variation, specifically the L scale.

3. Color Control

- Numeric color differences are recorded and retained from each run, and a visual assessment is performed.
- Color drift from run to run is expected on a very small scale. Recorded color reading are used for trending and color control.
- Each subsequent run is used for comparison to the next run. The goal is run-to-run consistency. Despite advancements in maintaining run-to-run consistency, material from different production dates should never be placed adjacent to each other in an installed application. There will be a slight visual difference.

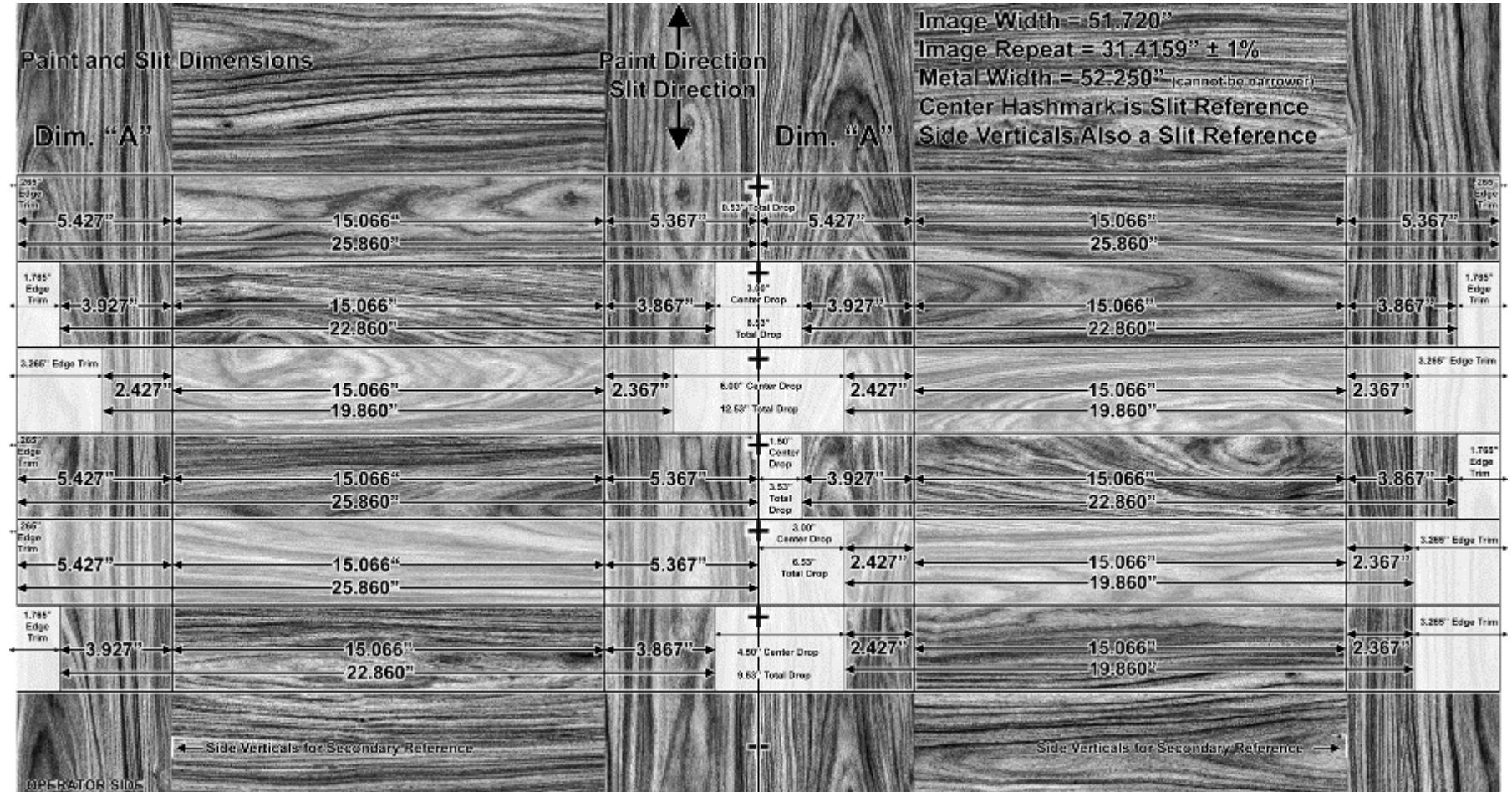
Custom Engineered Design Elements

Image components can be placed exactly where OEM requires to compliment panel or part profile



Bi-Directional Printing (Garage Doors)

Same print roll can be used for different size profiles if panel dimension is the same



Propriety

- Precoat will print custom, copyrighted material for the owners of such. If an OEM brings artwork to Precoat, Precoat will respect the propriety of such regardless if it is protected by copyright and or trademark.
- If OEM commissions Precoat to design a custom pattern, once completed Precoat will release copyrights and ownership of said artwork to the OEM.



OEM Specific Asset Procurement Policy

Highlights

- Precoat will procure custom equipment at OEMs direction and/or design artwork that satisfies their needs in order for Precoat to deliver desired finish for OEM.
- OEM will pay a setup fee to Precoat in order for Precoat to deliver desired finish.
- Precoat will maintain ownership of any and all equipment procured for any single OEM.
- Precoat will absorb all maintenance costs for said equipment.
- Precoat will respect proprietary nature of custom finish.
- Precoat reserves the right to re-purpose any equipment into a non-proprietary state after extended periods of inactivity.
- All setup fees are negotiable.

Woodgrains



Jackson Woodgrains



10347-B Page 21



10347-C Page 22



1868-H Page 23



9405-A Page 24



9682-A Page 25



9982-A Page 26



10505-A Page 27



10508-A Page 28



10507-B Page 29



10506-C Page 30

NEW

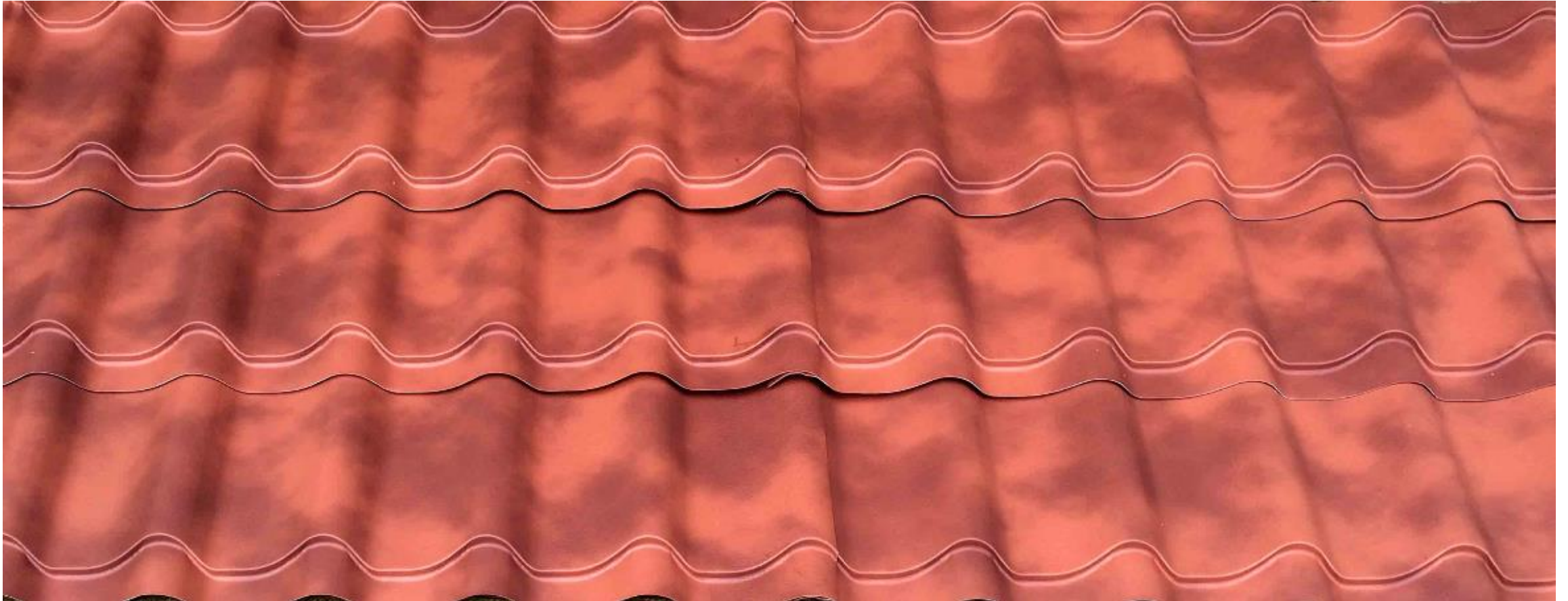
Straight Grain Lingue I607-D

- No repeat effects
- Perfect for Long Spans
- I607-D PAGE 31



8.5" x 11" Life Size Cutout

Mimics



Mimics



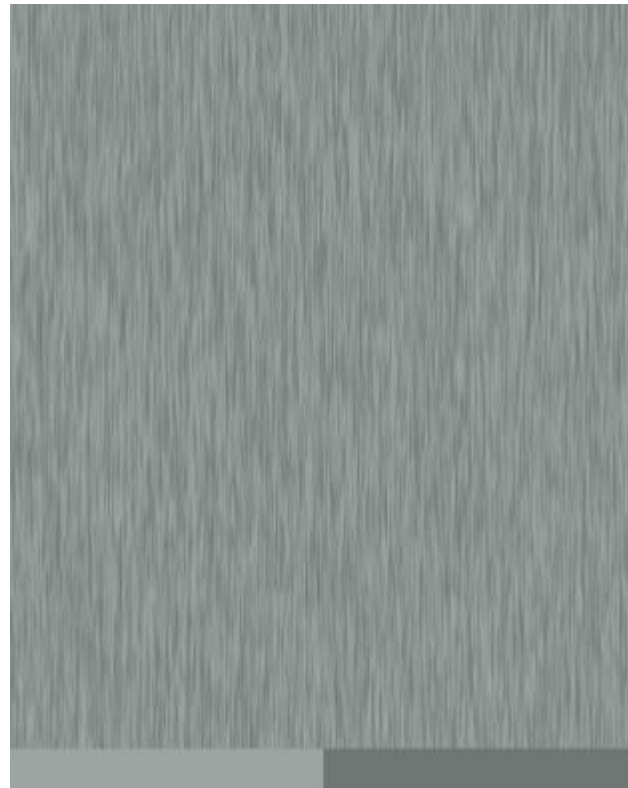
10221-B

Page 40



9994-A

Page 41



10348-A

Page 42



8217-AZ

Page 43



10206-A

Page 44

Mimics

Weathered Metal Series



Mimics Weathered Metals

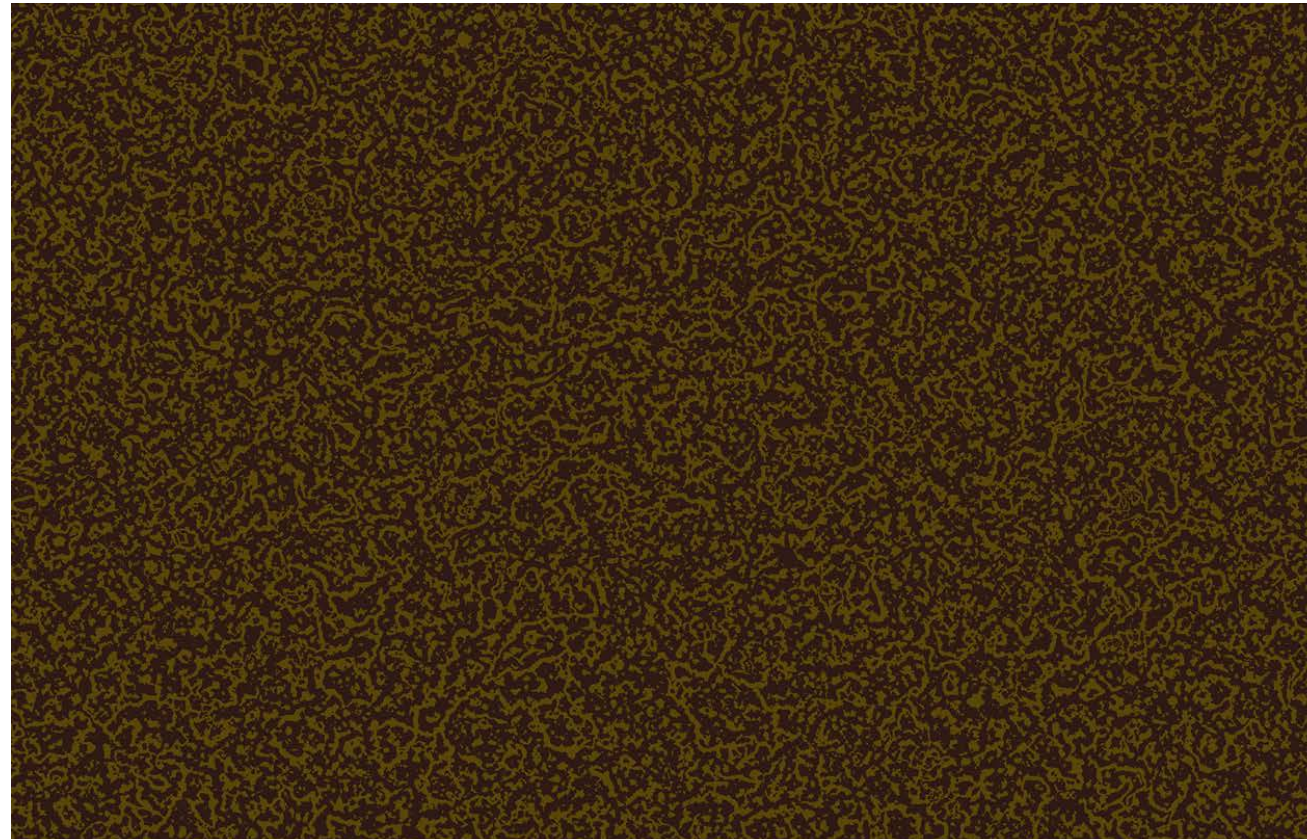
NEW Rustic Metal



9326-B Page 35



9326-C Page 36



10924-AZ Page 37



9326-D Page 38



8591-B Page 39

Camo



Camo



9340-A

Page 32



10205-B

Page 33



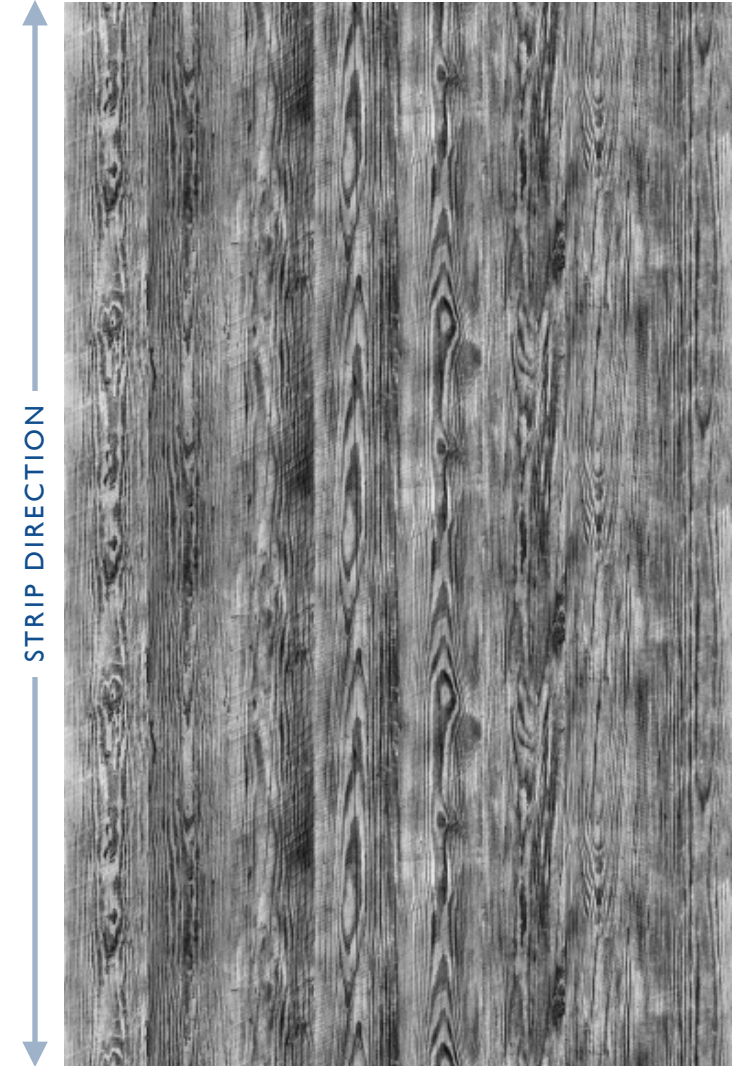
10441-A

Page 34

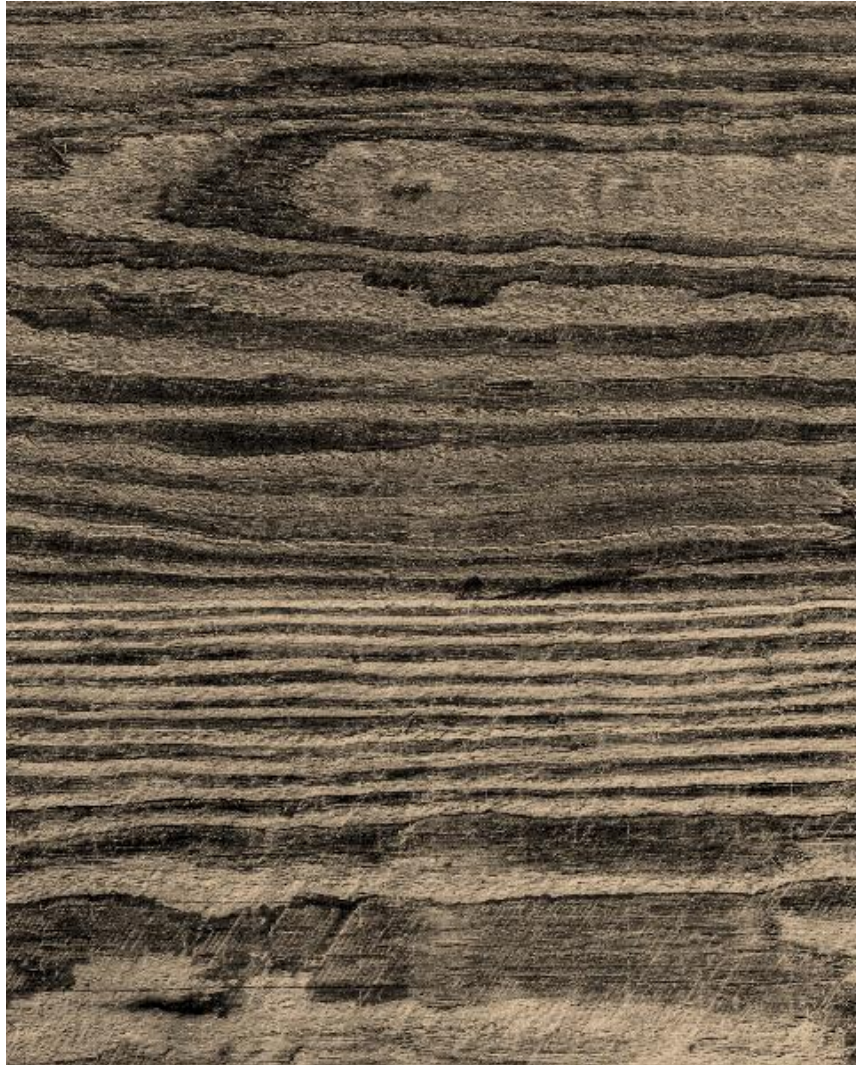


8" x 10" Life Size Cutout

10347-B
62.00" x 31.42"
Barnwood
Re-Claim Wood
Rustic Wood
Weathered Wood

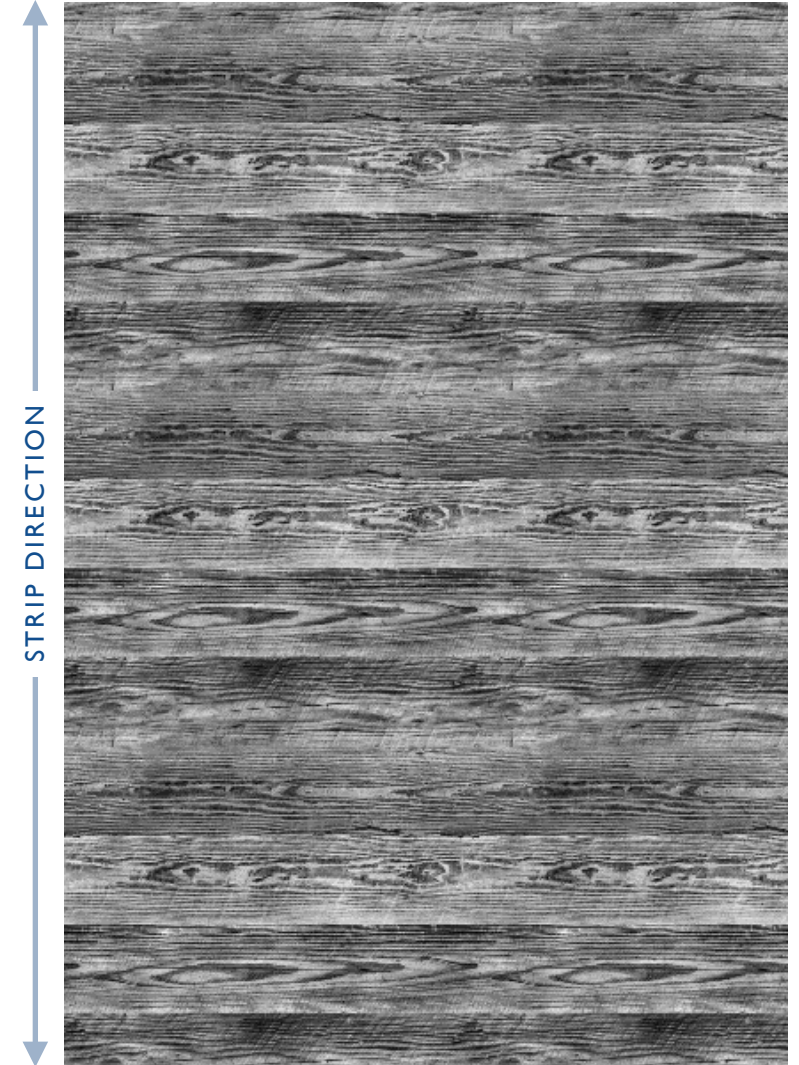


3X Repeat



8" x 10" Life Size Cutout

10347-C
62.00" x 31.42"
Barnwood
Re-Claim Wood
Rustic Wood
Weathered Wood



3X Repeat



8" x 10" Life Size Cutout

1868-H
62.00" x 27.65"
Walnut

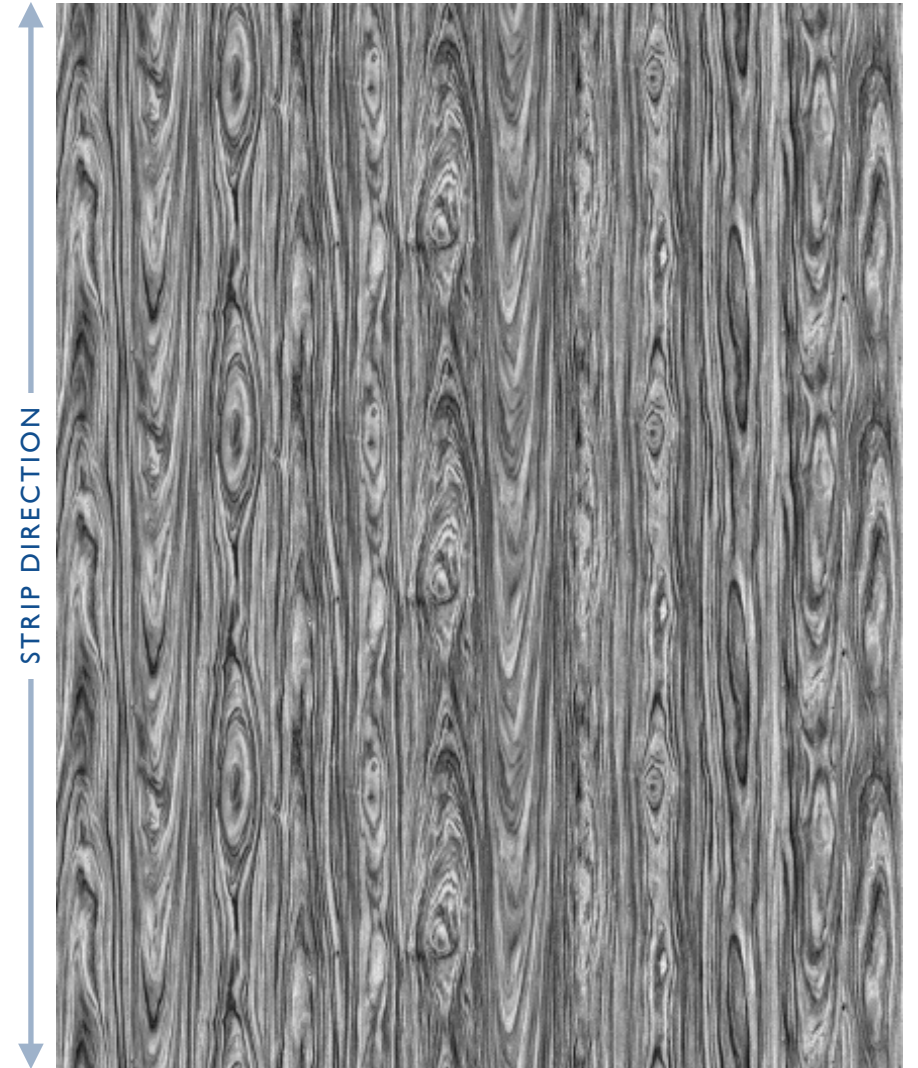


3X Repeat



8" x 10" Life Size Cutout

9405-A
66.00" x 27.65"
Pau Ferro



STRIP DIRECTION

3X Repeat



8" x 10" Life Size Cutout

9682-A
65.00" x 27.65"
Rough Cedar

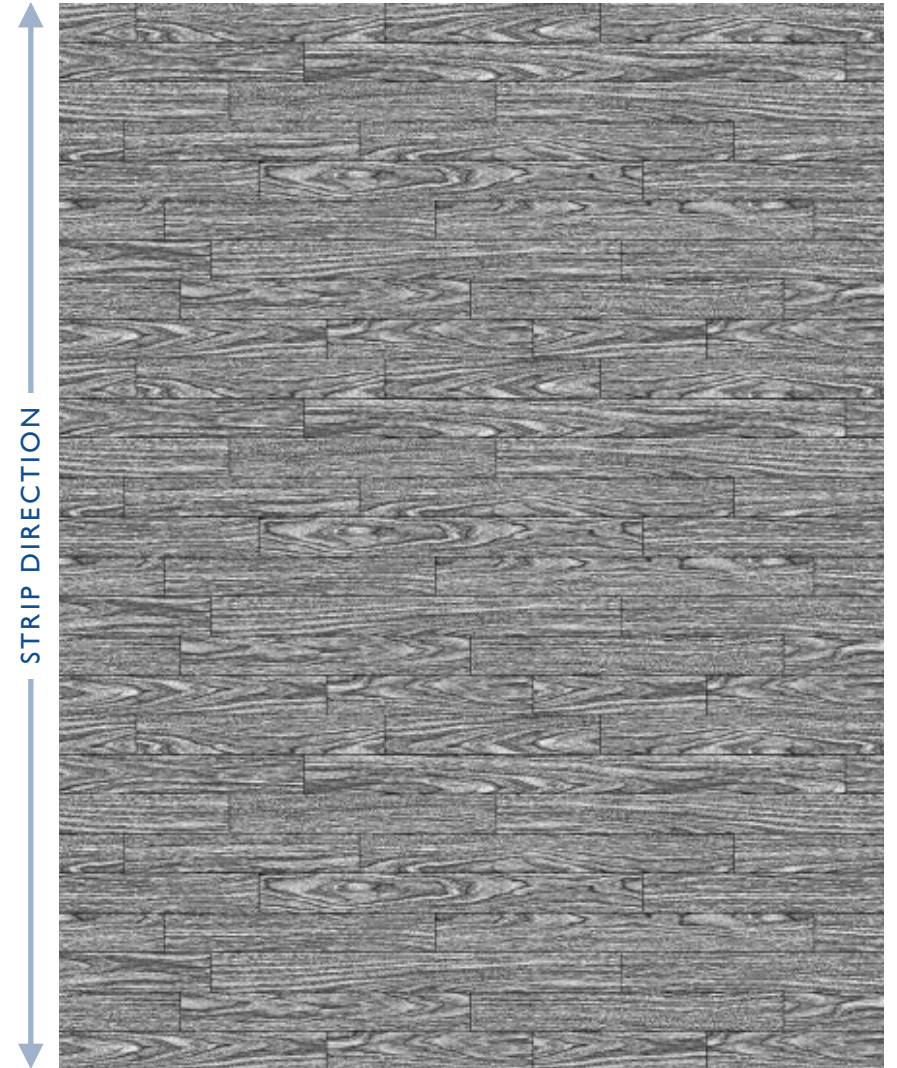


3X Repeat



8" x 10" Life Size Cutout

9982-A
66.00" x 27.65"
Oak Paneling
Hardwood Floor

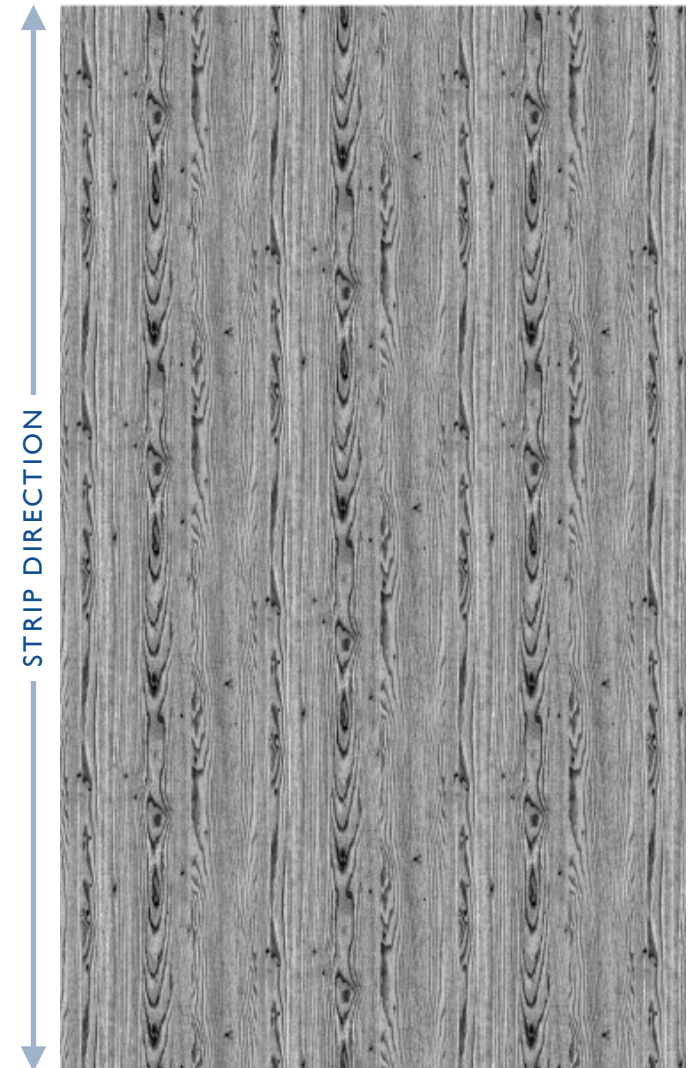


3X Repeat



8" x 10" Life Size Cutout

I0505-A
56.00" x 31.42"
Oak



3X Repeat



8" x 10" Life Size Cutout

I0508-A
56.00" x 31.42"
Mahogany



3X Repeat



8" x 10" Life Size Cutout

I0507-B
56.00" x 31.42"
Cherry



3X Repeat



8" x 10" Life Size Cutout

I0506-C
56.00" x 31.42"
Walnut
Oak
Straight Grain

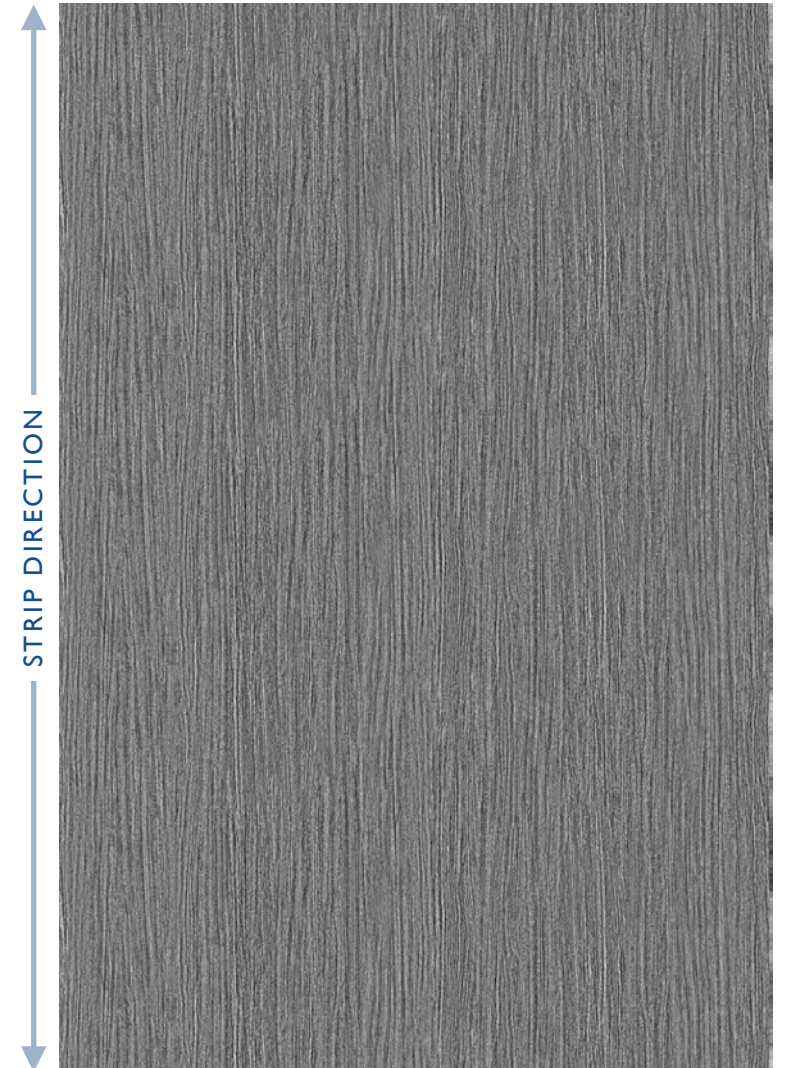


3X Repeat



8.5" x 11" Life Size Cutout

I 607-D
63.00" x 31.42"
Lingue
Straight Grain

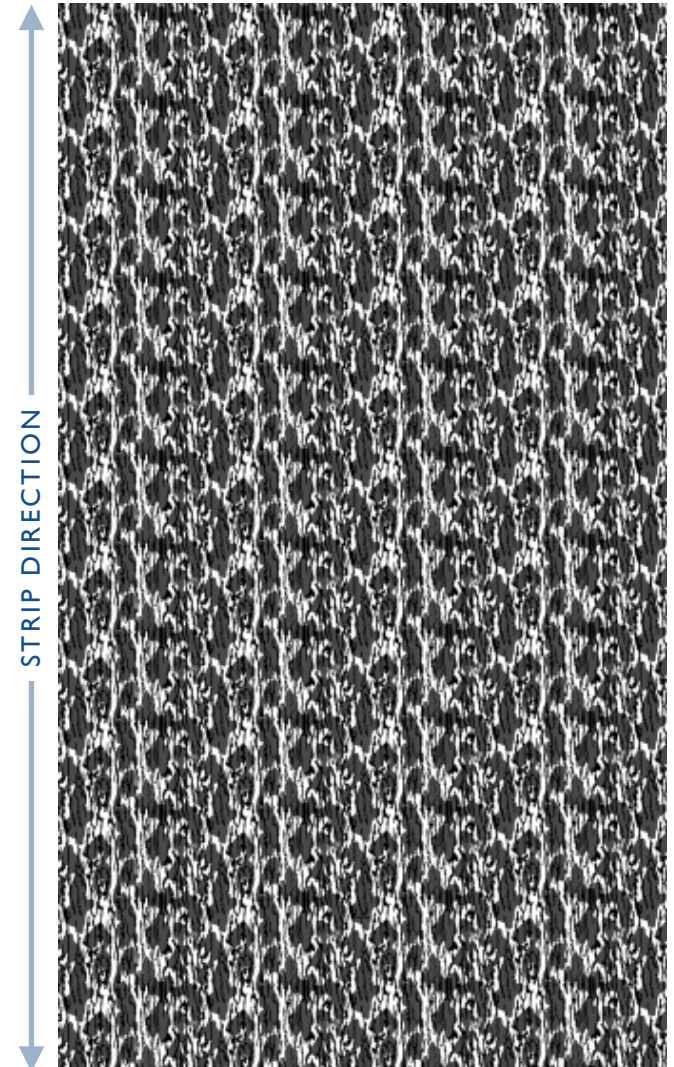


3X Repeat

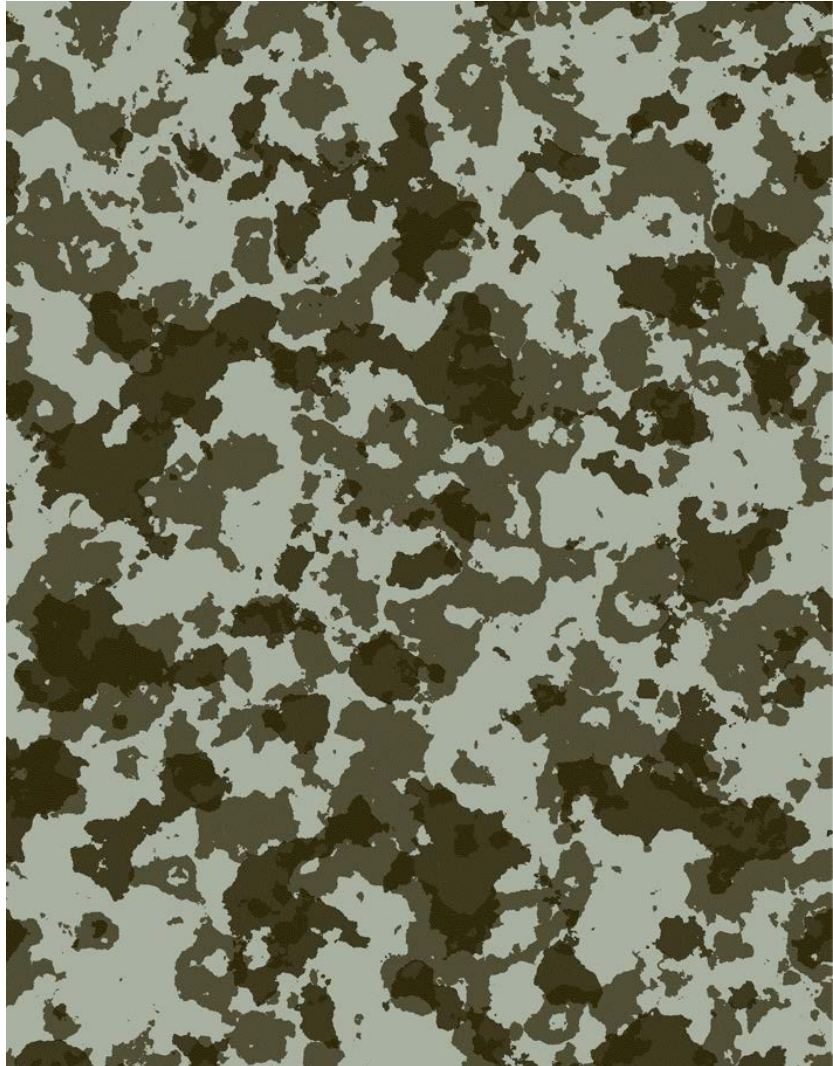


8" x 10" Life Size Cutout

9340-A
54.00" x 31.42"
Mossy Oak Bottomland®

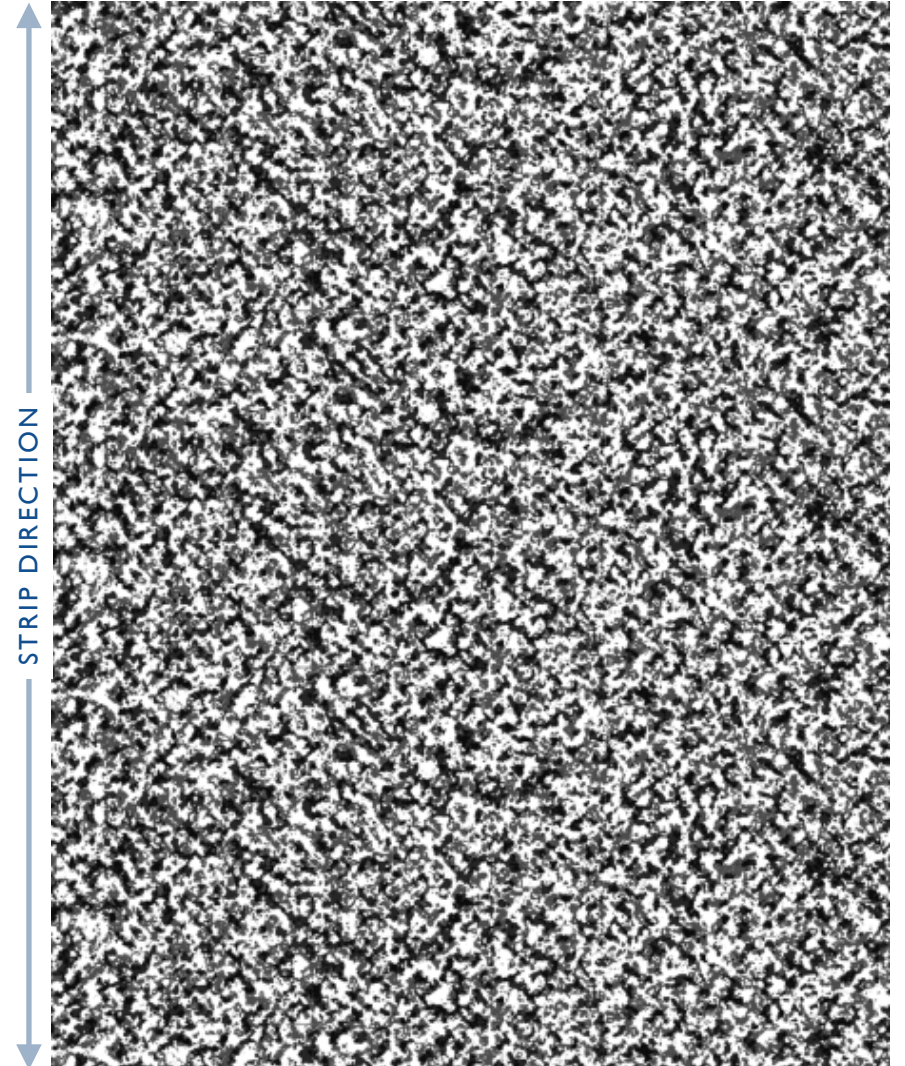


3X Repeat



8.5" x 11" Life Size Cutout

10205-B
65.00" x 27.65"
Precoat Camo

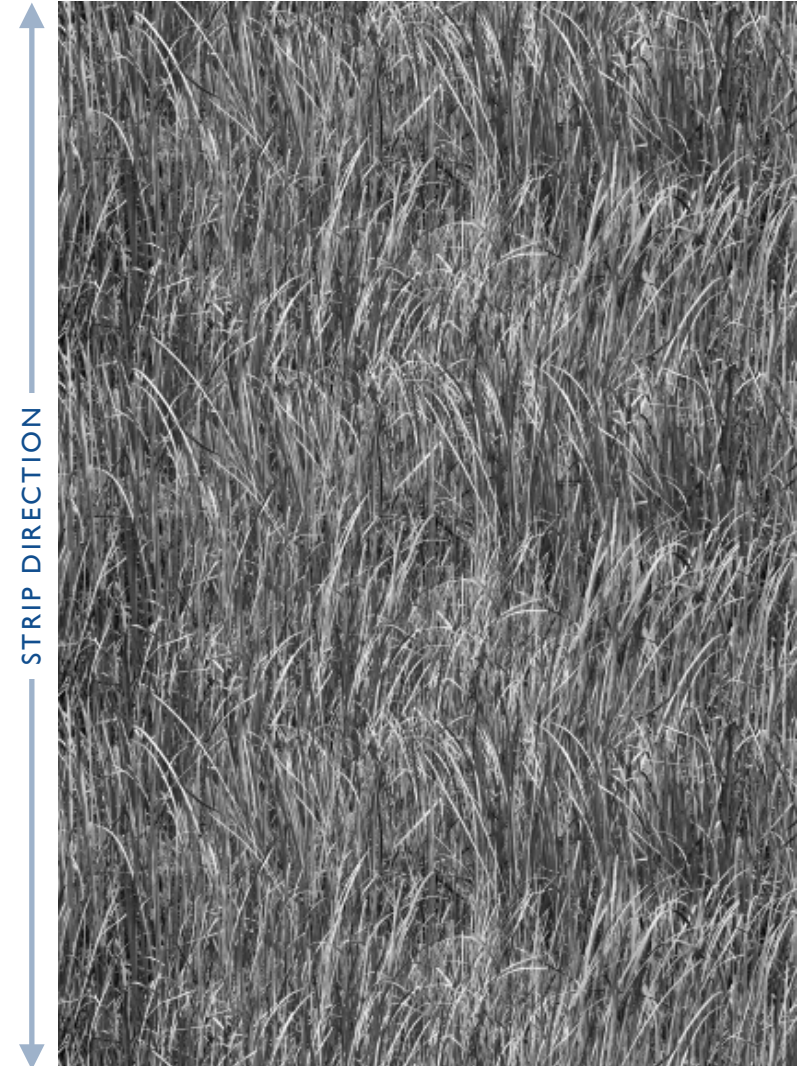


3X Repeat



8" x 10" Life Size Cutout

10441-A
65.00" x 31.42"
Camo Grass



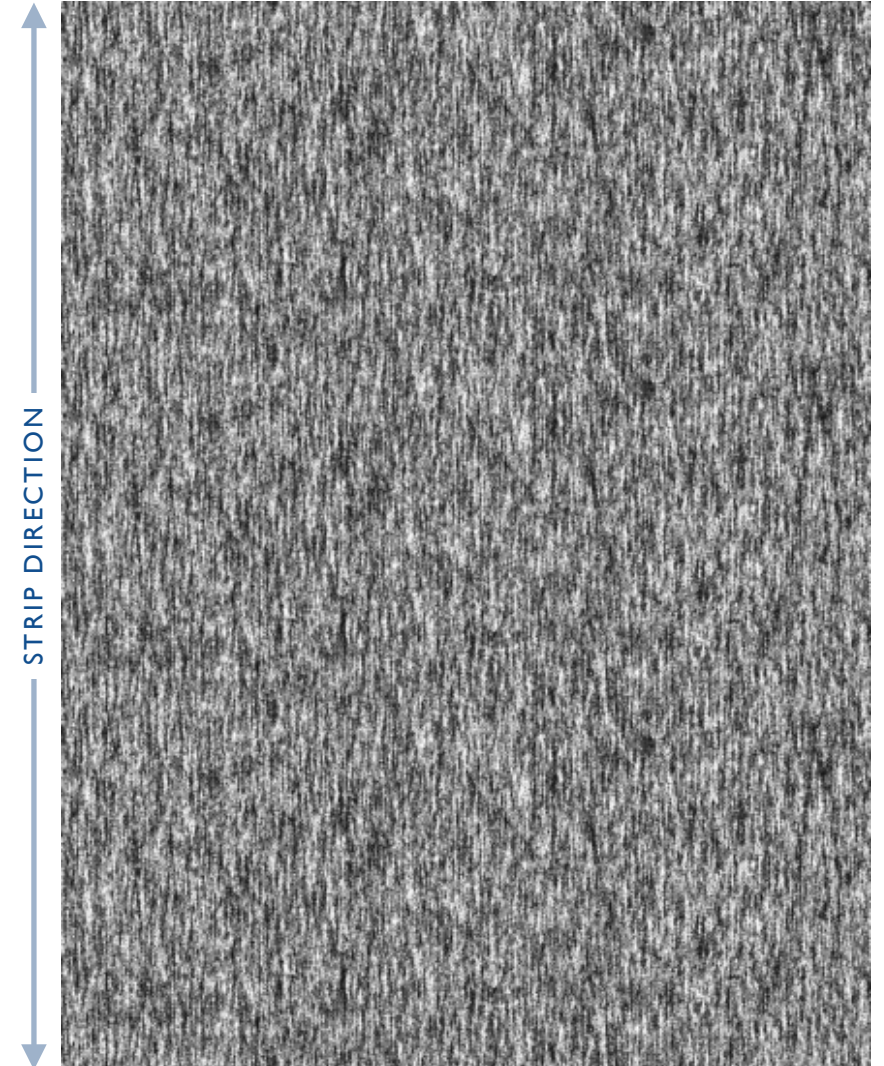
3X Repeat



8" x 10" Life Size Cutout

9326-B
63.00" x 27.65"
US Steel Corten AZP® Heavy Pattern

Only Available on US Steel Galvalume



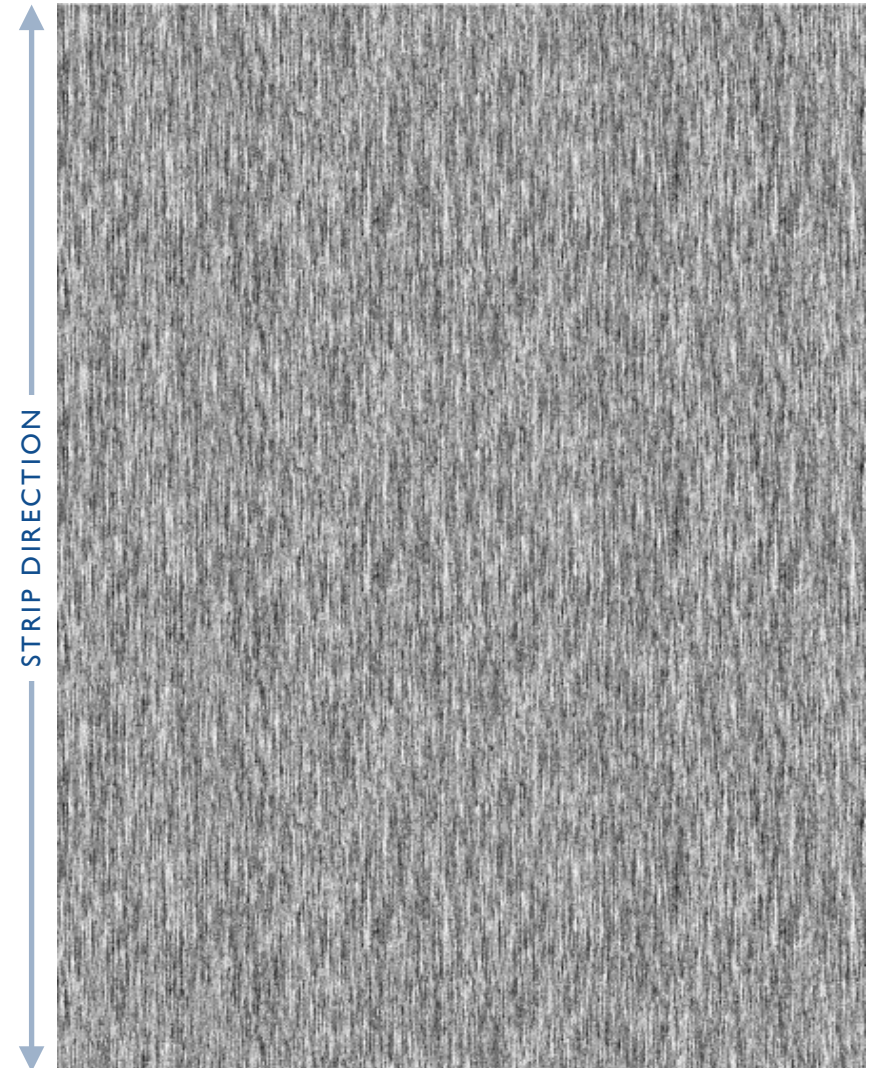
3X Repeat



8" x 10" Life Size Cutout

9326-C
63.00" x 27.65"
US Steel Corten AZP[®] Light Pattern

Only Available on US Steel Galvalume



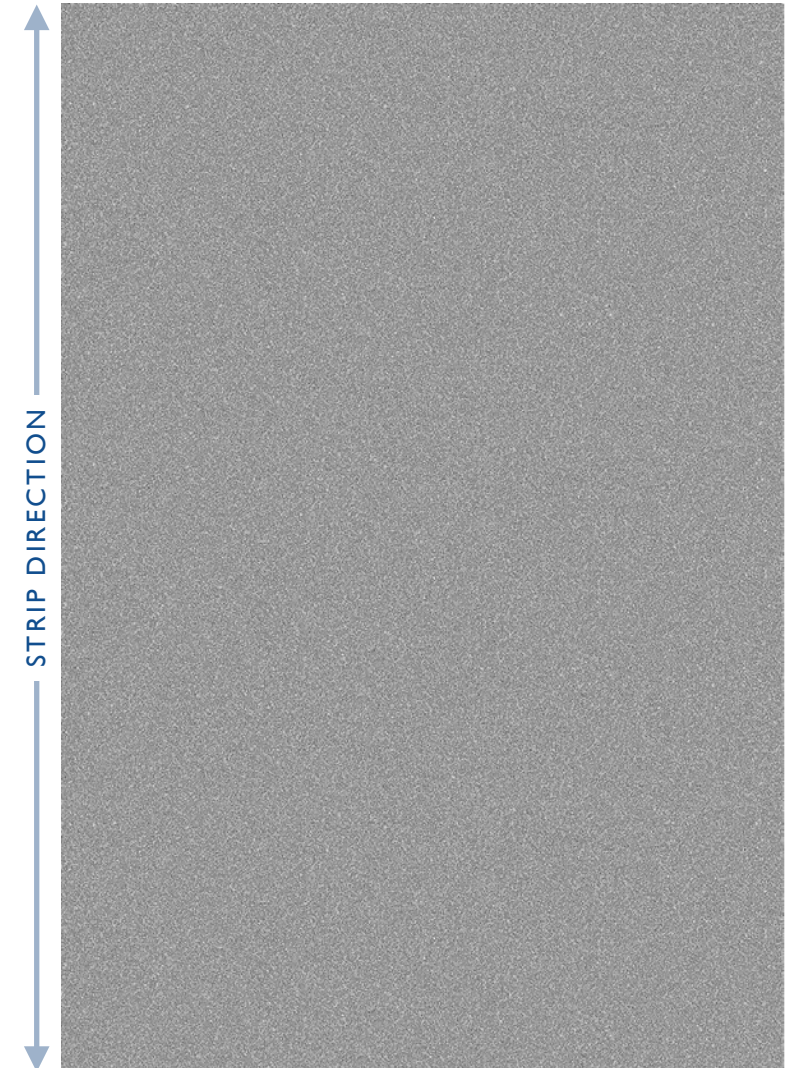
STRIP DIRECTION

3X Repeat



8" x 10" Life Size Cutout

10924-AZ
63.00" x 31.42"
Rustic Metal



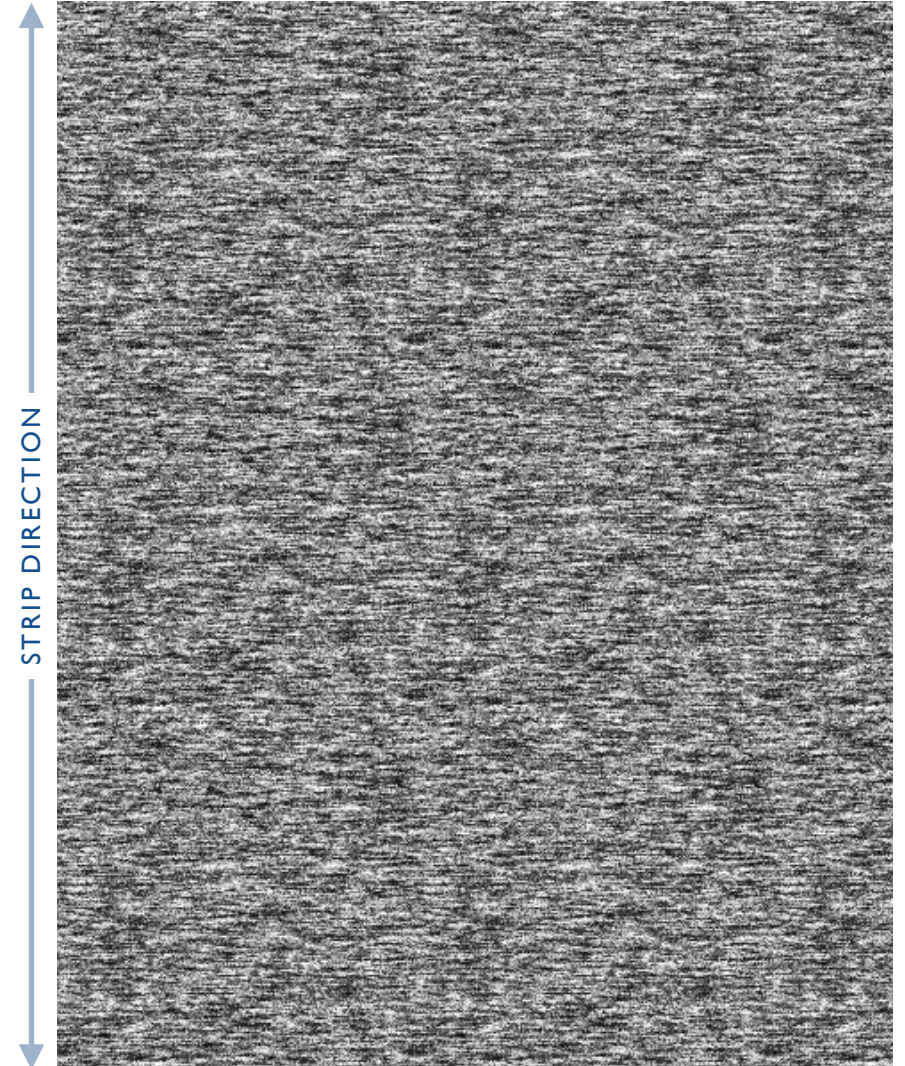
3X Repeat



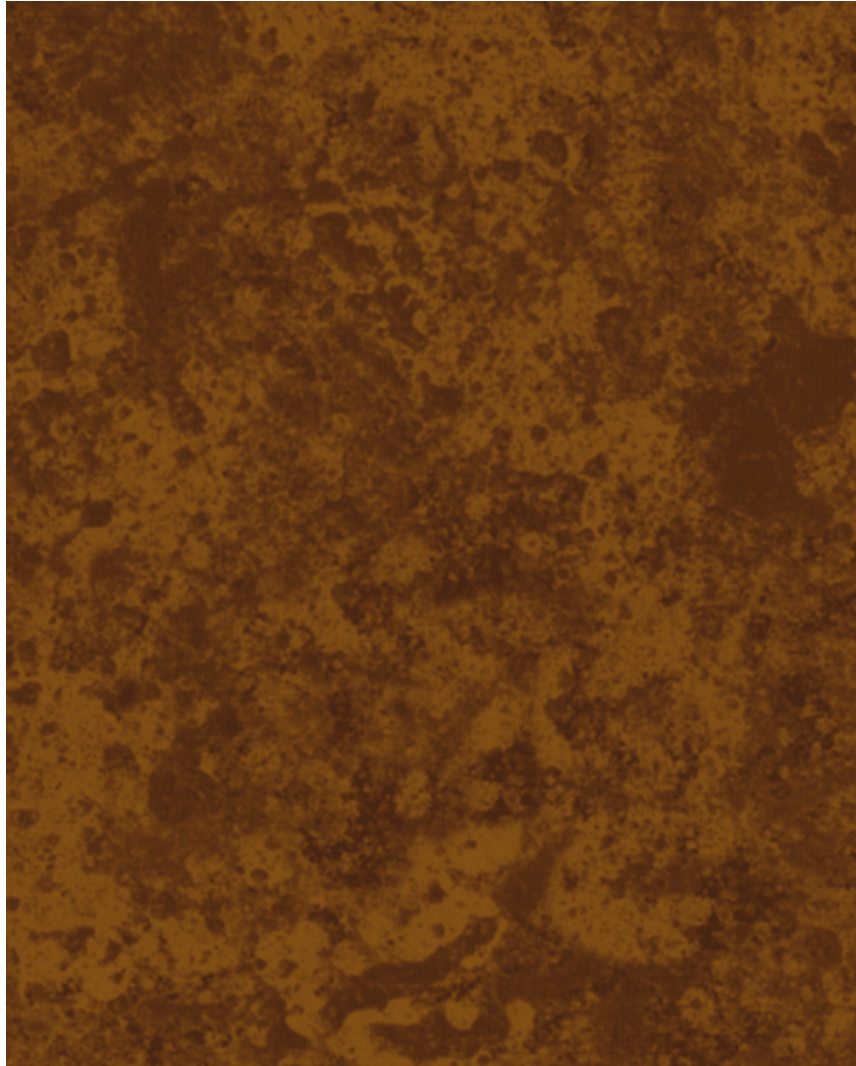
8" x 10" Life Size Cutout

9326-D
63.00" x 27.65"
US Steel Corten AZP® (90 °) Heavy Pattern

Only Available on US Steel Galvalume

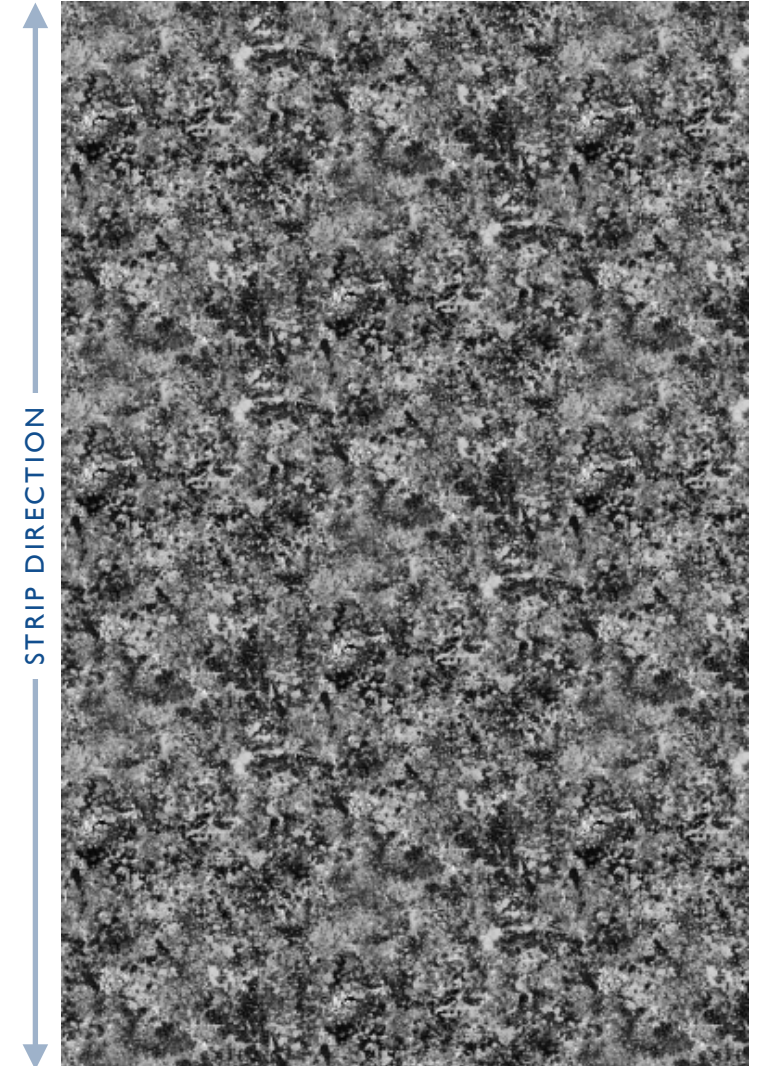


3X Repeat



8" x 10" Life Size Cutout

8591-B
63.00" x 31.42"
Aged Metal



3X Repeat



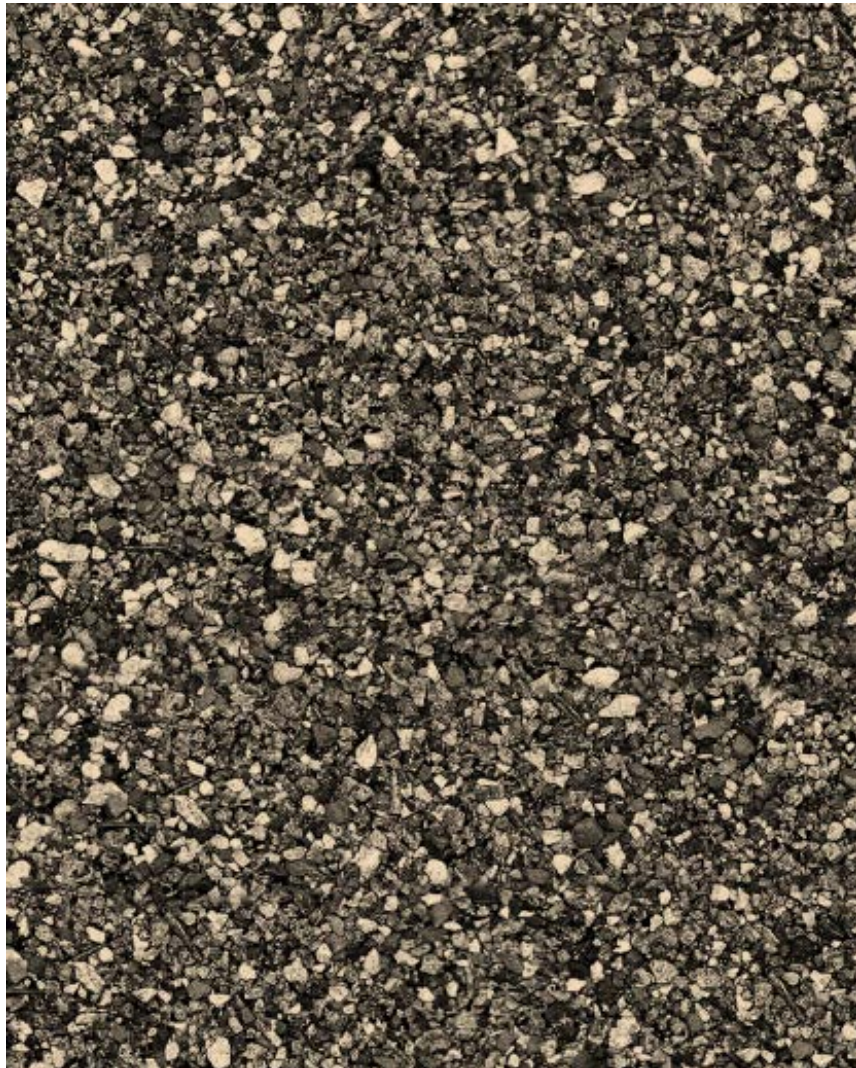
8" x 10" Life Size Cutout

10221-B
61.00" x 27.65"
Stonewall Jackson



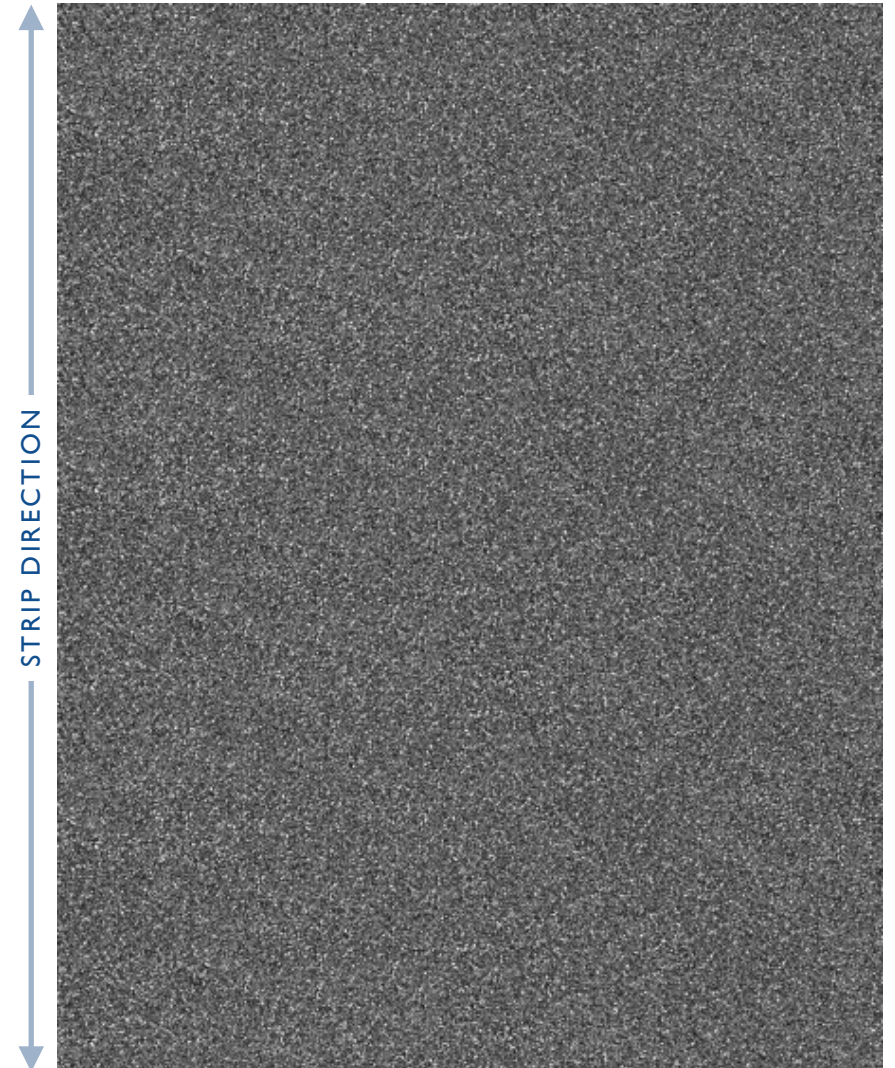
STRIP DIRECTION

3X Repeat

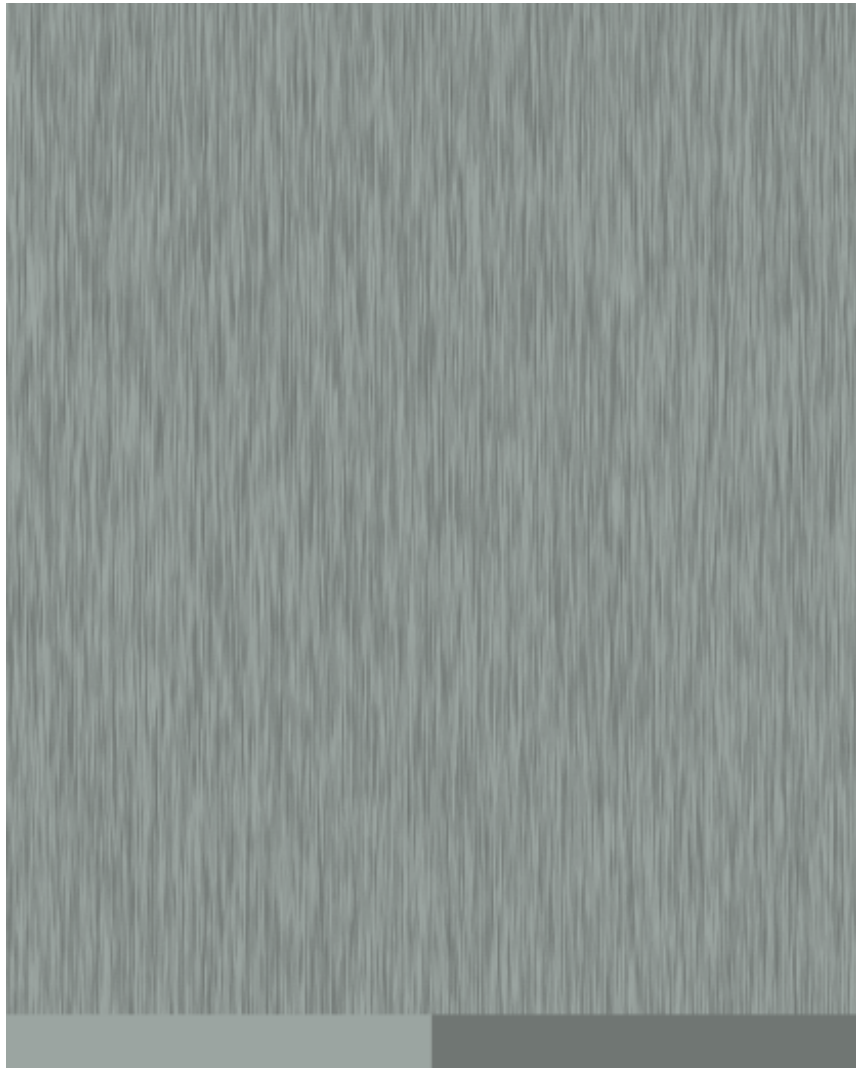


8" x 10" Life Size Cutout

9994-A
65.00" x 27.65"
Asphalt
Aggregate
Gravel

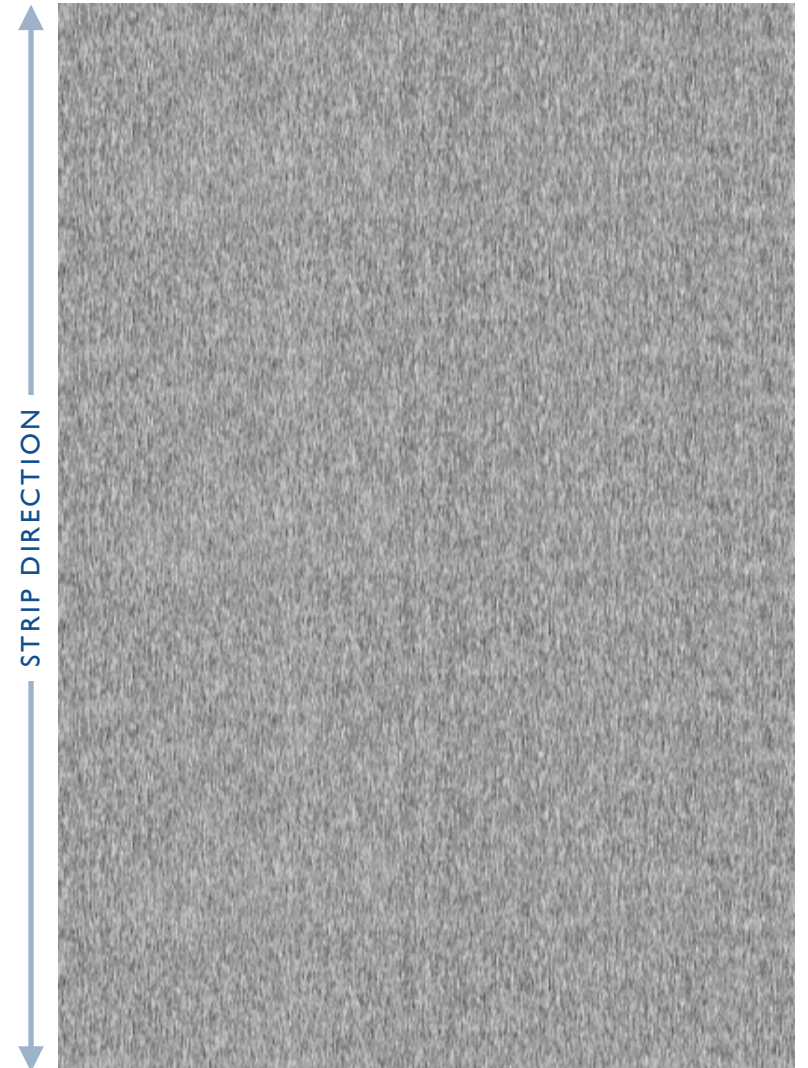


3X Repeat



8" x 10" Life Size Cutout

10348-A
64.00" x 31.42"
Brushed Metal

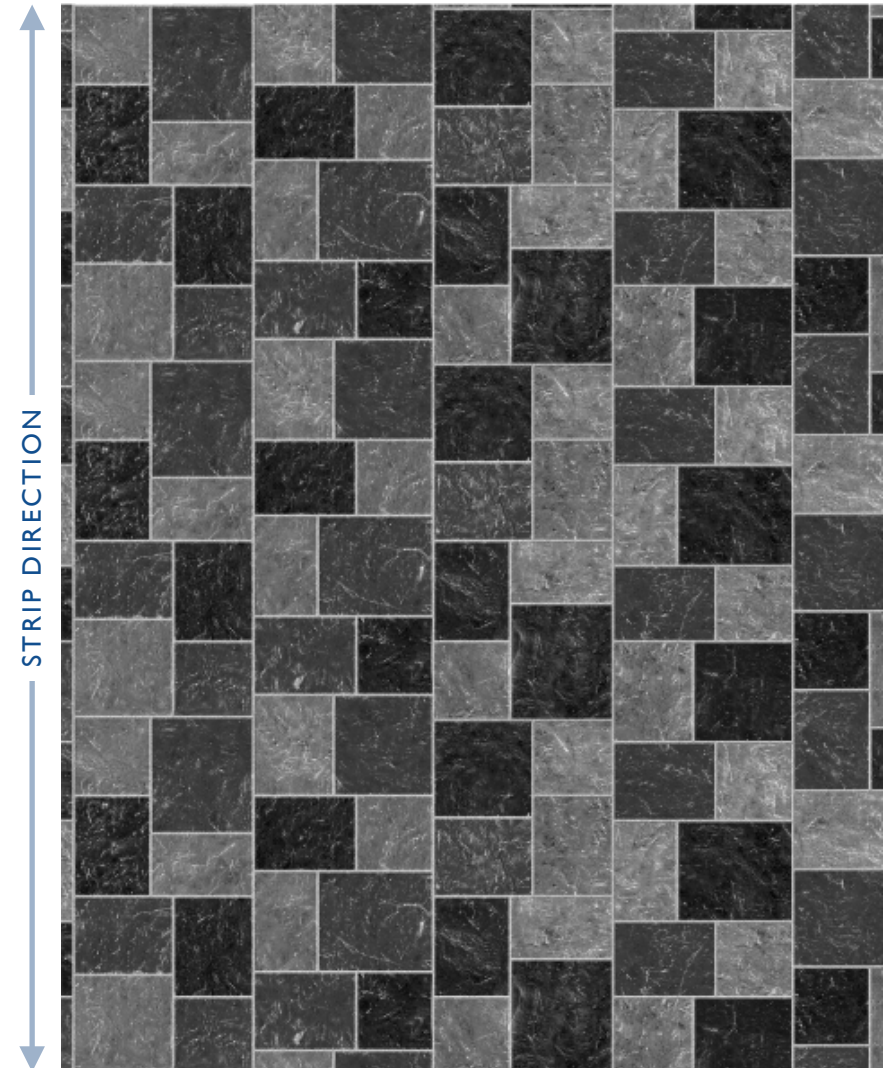


3X Repeat



8" x 10" Life Size Cutout

8217-AZ
63.00" x 31.42"
Architectural Tile
Slate Tile

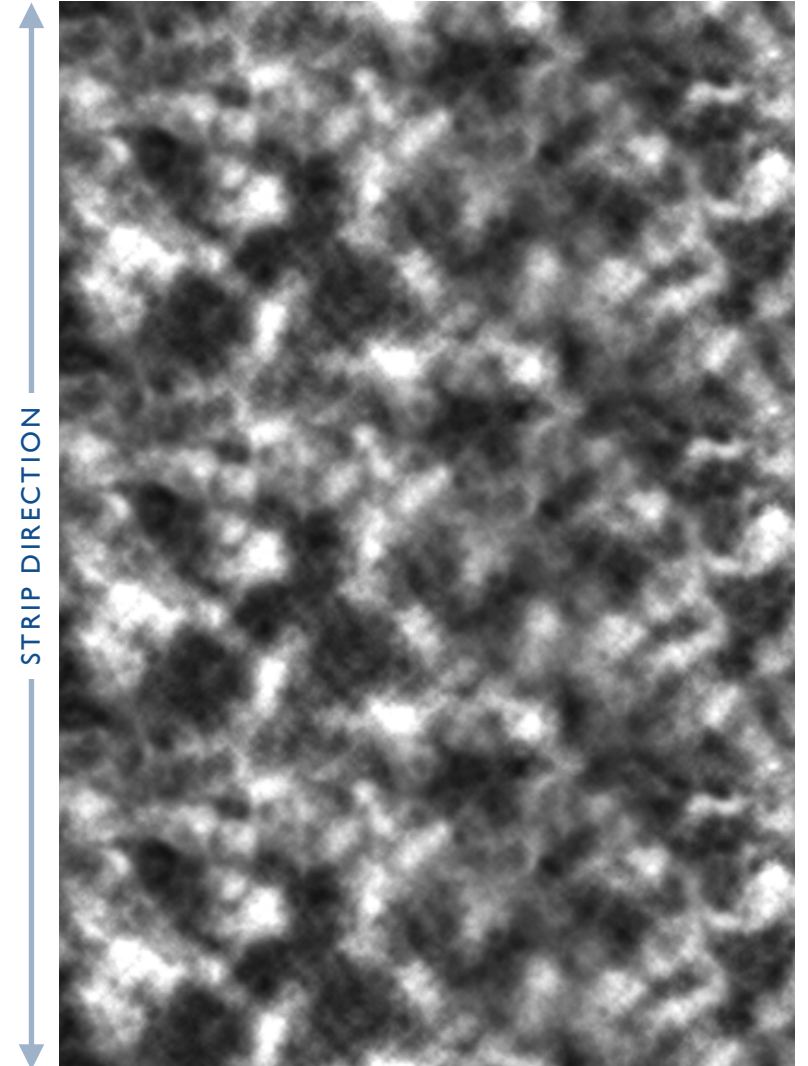


3X Repeat



8" x 10" Life Size Cutout

10206-A
65.00" x 31.42"
Variegated
Smoke
Clouds



3X Repeat